



PROVIDENCE
ANIMAL RESCUE LEAGUE

2020 IMPACT REPORT



489 Adoptions



107 small animals



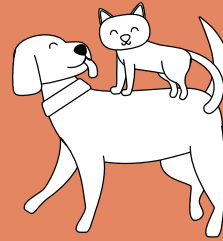
109 dogs



273 cats

Vaccine Clinics

343



served

42% 
INCREASE IN
ANIMALS SERVED
COMPARED
TO 2019

542 vaccines &
140 microchips
distributed through
six low-cost clinics


Low-Cost Spay/Neuter Clinic

Our surgery program was paused for several months so essential supplies could be redirected to human hospitals. Surgery resumed slowly in September and we began working through a backlog of over 200 pets on our Wait List.



Pet Food Pantry

48,315 meals served

 138% INCREASE
COMPARED
TO 2019

334

Community Pets

244

PARL Animals

166

Local Animal Control
and Rescue Groups

744

TOTAL

SPAY/NEUTER SURGERIES



ESSENTIAL SERVICE Our pet food pick up remained available by appointment all year



MASS DISTRIBUTION DURING PANDEMIC
We started offering Drive-Thru Pet Food Pantry events to maximize impact



TAKING THE PANTRY ON THE ROAD
We ran a distribution booth at Farm Fresh Rhode Island's Winter Market



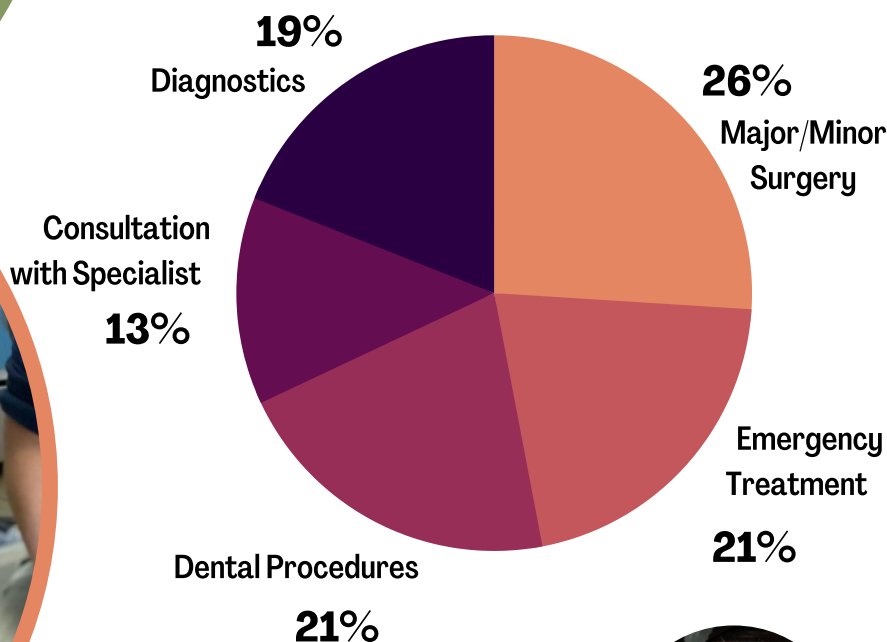
BRINGING JOY TO COMMUNITY PETS
We organized a Holiday Gift Drive for Pets, giving out over 250 gift bags with toys and treats to community pets over the holidays

Betsy's Fund

36

Animals in our care received special and/or life-saving veterinary care at a local veterinary hospital or clinic

MOST COMMON REASONS FOR CARE



LEAP Fund

100% of the **501** homeless animals we cared for in 2020 benefited from individualized enrichment activities and tools.

- Interactive toys
- Interactive feeders
- Outdoor playtime
- Off-site field trips and walks
- Scent therapy
- Basic obedience/skill-building
- Music and sound therapy



Rukki

Tommy

Jasper

5

Dogs with specific behavioral challenges participated in off-site group classes with experienced trainers and were adopted out with vouchers for 6-weeks of additional training to set them up for success in their new homes.



Ashes



PROVIDENCE
ANIMAL RESCUE LEAGUE